

spotlight

SEPTEMBER 2008 • ISSUE 0007

A PUBLICATION FOR VOTING MEMBERS OF MARYLAND FARM BUREAU



Talbot County delegate wins Miss MD Agriculture

Lisa Daffin of Queen Anne captures title

Lisa Daffin of Talbot County became the 2008 Miss Maryland Agriculture during opening ceremonies at the Maryland State Fair.



Delegation trip details announced for AFBF Convention

Trip details at a glance

- Travel to San Antonio on Saturday, January 10th
- Convention activities on Sunday and Monday, January 11th and 12th
- Group dinner at Saltgrass Steak House on Monday night
- Two optional tours available on Tuesday, January 13th
- Travel home on Wednesday, January 14th

More than 5,000 Farm Bureau members are expected to attend the 90th annual American Farm Bureau Federation Convention in San Antonio, Texas, scheduled for January 11-14, 2009. Former U.S. Sen. Bill Bradley will deliver the keynote address.

“Bill Bradley is a respected bipartisan statesman who is well known for his ability to bring people together to solve problems,” said AFBF President Bob
(continued on page 3)

Talbot County’s Lisa Daffin appeared to be shocked when her name was announced as the new Miss Maryland Agriculture. But genuine excitement and congratulations exuded from the 21 other contestants as they surrounded the winner after the contest.

Twenty-two county Farm Bureaus were represented during the annual contest that kicked off the Maryland State Fair in Timonium.

Taking the top agriculture spokesperson title, college sophomore Miss Daffin lives on her family’s grain, vegetable and greenhouse operation in Queen Anne.

Four contestants were named to a court to assist the state winner throughout the fair and during the year ahead. Judges selected Clare

Knickman of Harford County as first runner up; Brittany Arnold of Frederick County as second runner up; Brenna House of Washington County as third runner up; and Becky Berkebile of Garrett County as fourth runner up.

(continued on page 4)

The MFB Young Farmers Annual Meeting

MFB Convention
Clarion Hotel
Ocean City, Maryland

Sunday, December 7, 2008

12:30 p.m. - 4 p.m.

Keynote Speaker
Dan Durham, American Farm Bureau

Please RSVP by Nov. 17, to Laura Ruhlman in order to confirm your attendance. Laurar.mdfb@erols.com or 410-374-2324

(continued on page 6)

Maryland Farm Bureau

Officers

W. Michael Phipps, *President*
Patricia Langenfelder, *1st Vice President*
Chuck Fry, *2nd Vice President*
Mel Hollingsworth, *Administrator*

Directors

Glenn Stahlman, Allegany
Jeffrey Griffith, Anne Arundel
Earl Griffith, Anne Arundel
Keith Wills, Baltimore
Walt Wells, Calvert
Harry Moreland III, Caroline
David W. Beall, Carroll
Joe Kuhn, Carroll
Wayne Stafford, Cecil
Pat Wathen, Charles
Brinsfield Lowe, Dorchester
Gareth Harshman, Frederick
Thomas Browning, Frederick
Paul Miller, Garrett
Samuel Fielder III, Harford
Howie Feaga, Howard
Brian Quinn, Kent
George Lechluder, Montgomery
Chris Parker, Prince George's
Bob McCormick, Queen Anne's
Joseph Wood, St. Mary's
Larry Thomas, Somerset
Gerald O'Mara, Talbot
Galen Long, Washington
William Kenney, Wicomico
Danny Holland, Worcester
Evelyn Wilcom, FB Women
Elaine Moreland, FB Women
Brian Johnson, Young Farmers
Hannah Amoss, Young Farmers

Maryland Farm Bureau Spotlight

Susan G. Summers, Editor
12221 Fingerboard Road
Monrovia, MD 21770
(301) 865-1045 • Fax (301) 865-1057
e-mail: ssummers@comcast.net

Designed by Jennifer C. Hankey,
HDI Corporation
PO Box 3583 • Frederick, MD 21705
(301) 668-3333 • (301)668-3334 fax
e-mail: jhankey@hdicorporation.net

USPS 012-269-ISSN1080-3556
(410) 922-3426 mdfb1@erols.com
website: www.mdfarmbureau.com

Maryland Farm Bureau Spotlight is published monthly by Maryland Farm Bureau Inc., 8930 Liberty Road, Randallstown, MD 21133-4295.

•POSTMASTER: Send address changes to Maryland Farm Bureau Spotlight, 8930 Liberty Road, Randallstown, MD 21133.

•Any editorial material may be reproduced with credit to this publication.

County Farm Bureau Final Membership Honor Roll (As of June 30, 2008)

County Farm Bureau Membership Goals are based upon Regular Members, represented in the first two columns. The last column reports the total members paid, including both regular and associates.

| County | YTD Regular Members Paid | Needed for goal | YTD All Members Paid |
|------------------------|--------------------------|-----------------|----------------------|
| Allegany** | 129 | -3 | 140 |
| Anne Arundel | 930 | 38 | 3419 |
| Baltimore | 521 | 41 | 4537 |
| Calvert | 277 | 13 | 934 |
| Caroline** | 277 | 13 | 853 |
| Carroll** | 378 | -13 | 1602 |
| Cecil | 919 | -62 | 801 |
| Charles** | 296 | 13 | 1064 |
| Dorchester | 242 | -8 | 685 |
| Frederick** | 227 | 9 | 2215 |
| Garrett** | 893 | -12 | 184 |
| Harford** | 181 | -3 | 1931 |
| Howard | 452 | -13 | 1162 |
| Kent** | 199 | 8 | 371 |
| Montgomery | 256 | -7 | 3561 |
| Prince George's | 315 | 10 | 2333 |
| Queen Anne's** | 224 | 12 | 591 |
| St. Mary's | 320 | -8 | 774 |
| Somerset** | 342 | 3 | 502 |
| Talbot | 234 | -6 | 699 |
| Washington** | 278 | 13 | 871 |
| Wicomico | 275 | -5 | 780 |
| Worcester | 338 | 21 | 61 |
| Maryland Totals | 8,491 | 49 | 30,622 |

** Denotes the counties that have made 2008 membership goals



Forestry conference set for fall

The new economics of world energy supply are driving rapid growth and innovation in biomass related fuels. Those who work at the ground level in implementing society's framework for protecting the environment are positioned at the leading edge of the changes and challenges of this discussion.

The Maryland Forests Association has invited leaders in the bio and alternative energy fields to speak on this fast changing field and to address the practical ways one can become involved charting the future of this industry in the state. The Conference on Renewable Energy and the Role of Forests and Forestry will be held Oct. 31-Nov. 1, at the Loews Annapolis Hotel.

Friday's keynote presentation, "With Vision, There is Hope," will feature award-winning activist, Bruce Vincent of Libby, MT. Saturday's sessions begin with updates on state and national forestry issues will be given by MD State Forester Steve Koehn and Michael T. Goergen, Jr., CEO of the Society of American Foresters.

Other sessions include: The Role of Forests in Biomass Energy Production, with discussions on *Woody Waste as Fuel for Renewable Energy* by Bill Rodenberg, CEM Energy Management

Strategies, Inc; *Cellulosic Ethanol - Fact or Fiction* by Kirk Martin, Ascendant Partners; *Wood Energy at Community Scale - The Leadership Roles for Foresters, Landowners and Logging Professionals* by John T. Karakash, Resource Professionals Group; Renewable Energy Projects for Landowners with discussion on *Wind Power Basics for Forest Landowners* by Patrick Doyle, Director of Development, Northeast Horizon Wind Energy; and *Financing Small Wind Projects* by Bruce Weaver, Business & Community Specialist, USDA Rural Development.

Pre-registration is required. Full agenda, registration brochure, speaker and hotel details are on the MFA website at <http://mdforests.org/AM2008.htm>. Deadline for registration is October 17th. Contact the MFA office for further information at 301-895-5369 or mdforests@hereintown.net.

Delegation trip details announced for AFBF Convention

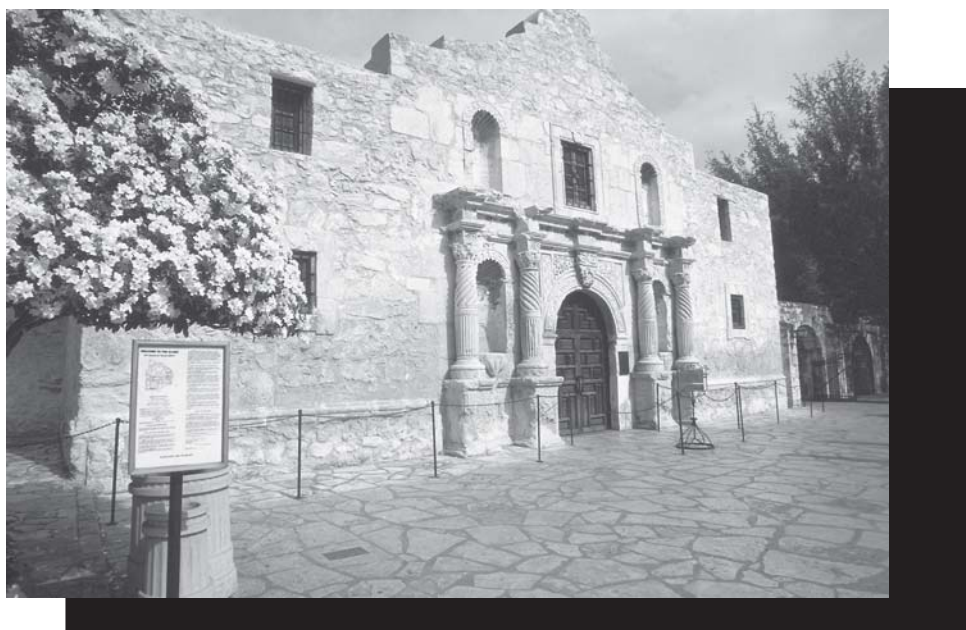
(continued from page 1)

Stallman, a Columbus, Texas rice and cattle producer. “Senator Bradley’s comments will be particularly well suited for Farm Bureau’s annual convention in January because a new president and a new Congress will be coming into office. He will provide valuable insights on what the new president must do to achieve public policy success.”

Members will learn more about the forces shaping agriculture today and participate in a grassroots policy setting process that will guide Farm Bureau through 2009.

If you would like to receive a trip brochure when they are printed, call (800) 248-9012 or email melh.mdmb@erols.com to request one. Include your name, address, phone number and email address if you have one.

Hyatt Regency San Antonio on the Riverwalk – The Hyatt Regency San Antonio features a stunning view of the Riverwalk and



old San Antonio and is across the street from the Alamo. It is about four blocks from the Convention Center. The hotel’s 16-story garden atrium is built over an extension of the San Antonio River, which flows through the lobby via a series of water cascades.

Saltgrass Steak House – In the mid-1800s, millions of Longhorn roamed freely throughout Texas. With the taste of beef becoming a newfound favorite in the north, Texas ranchers prospered as never before. Each winter, the Longhorn were driven to the Texas Gulf Coast to graze on the rich coastal saltgrass. And when they headed for market, they followed the legendary Salt Grass Trail, known for the best beef in Texas. In 1952, this historic trail ride was revived to publicize the opening of the Houston Livestock Show and Rodeo.

Today, the ride has become an annual celebration of that original Texas spirit. The first Saltgrass Steak House still stands along this historic trail. The Saltgrass Steak House recaptures the flavor of the open campfire.



EDUCATIONAL TOURS

You have the opportunity to select from two, reasonably priced tours on Tuesday, January 13th.

Tour #1 – Morales Feed Lots in Devine (\$43 per person; 8:30 a.m.-4:30 p.m.)

Morales Feed Lots, Inc. is one of the premier cattle feeding companies in South Texas with over 16,000 head including Mexican Steers. You will also visit the Thompson Ranch to see its cow/calf operation, wildlife package hunts and turf farm (grown for use in yards and golf courses); and the Beever Family Farm with its cow/ calf operation. Both sites are located in Pearsall which is situated right in the heart of “The Golden Triangle” – nationally known as “Hunter’s Paradise.” Cowpokes BBQ lunch is included.

Tour #2 – Lyndon B. Johnson National Historical Park (\$51 per person; 8:30 a.m.-4:30 p.m. This historical park tells the story of our 36th President beginning with his ancestors until his final resting place on his beloved LBJ Ranch. This entire “circle of life” gives a unique perspective into one of America’s most noteworthy citizens. Tour also includes the LBJ Ranch, a working ranch where cattle are still raised; and the Sauer-Beckmann Farm, demonstrating rural life from 1900-1918, with costumed interpreters carrying out the day-to-day activities of a turn-of-the-century, Texas-German farm family. Lunch is included.

Four-Night Convention Package

- Four nights at the Hyatt Regency
- Hotel taxes and baggage handling
- AFBF Convention Registration Fee
- Maryland Delegation Dinner at Saltgrass Steak House

(continued on page 8)

Lisa Daffin of Queen Anne captures title

(continued from page 1)



Miss Maryland Agriculture Lisa Daffin, center, is surrounded by her "court" of runners up who will assist in spreading the word about agriculture during the coming year. From left, are, Brenna House of Washington County, third runner up; Clare Knickman of Harford County, first runner up; Miss Daffin; Brittany Arnold of Frederick County, second runner up; and Becky Berkebile of Garrett County, fourth runner up.

Miss Daffin is the daughter of John and Kay Daffin and she works on her family's farm when she is home from college. She is a sophomore at West Virginia University, majoring in agricultural education and Extension with a minor in agriculture business. She plans to get her masters in horticulture and wants to either teach and be an FFA advisor or work in Extension.

At WVU, Lisa is an active member of the equestrian team, collegiate FFA and Block and Bridle club. She is a 10-year member of 4-H with the Chapel District and Hoofbeats 4-H clubs. She held several leadership roles while in 4-H, including the Talbot County 4-H Council secretary. She was also a member of the Easton High

FFA Chapter and served as president, treasurer and reporter.

Among her many 4-H and FFA activities, the new spokesperson excelled in hippology (horse) knowledge competitions as well as marketing, ag sales, ag communications and ag issue contests. She competed in national FFA contests in Louisville and Indianapolis and attended leadership events in Springfield, Mass., and Washington, D.C.

Lisa has participated in numerous community service activities, including picking vegetables for the homeless, delivering hay for Hurricane Katrina horses and donating pumpkins to nursing home residents. She's also an active member of her United Methodist church. Her hobbies include horseback riding and competing in horse shows, competing in antique tractor pulling and fishing.

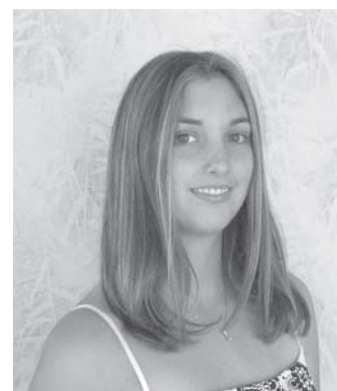


Maryland Farm Bureau President Mike Phipps, left, welcomed Lisa Daffin as the lead agricultural spokesperson following the contest.

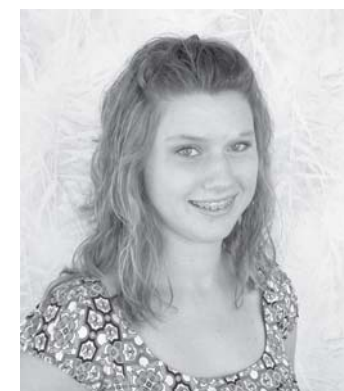
Miss Maryland Agriculture County Contestants



Crystal Hatfield
Calvert



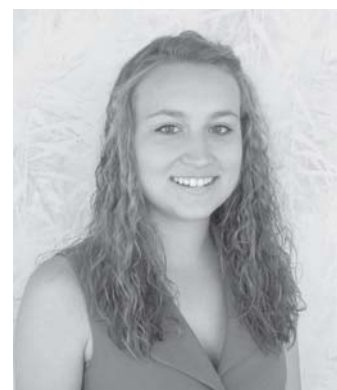
Amber North
Caroline



Clare Yeager
Carroll



Brittany Arnold
Frederick



Becky Berkebile
Garrett



Clare Knickman
Harford



Rachel Miller
Prince George's



Billie Ricketts
Queen Anne's



Emmilee Guy
St. Mary's



Chelsea Brotemarkle
Allegany



Brittany Faber
Anne Arundel



Lindsay Hash
Baltimore



Caroline Isaacson
Cecil



Elena Bode
Charles



Kacee Windsor
Dorchester



Caitlin Patrick
Howard



Morgan Price
Kent



Cameron Irons
Montgomery



Brenna House
Washington



Jordan Calloway
Wicomico



Desera Martin
Worcester

SUCCESSFUL MISS MARYLAND AGRICULTURE CONTEST

Congratulations to all of the outstanding young ladies who participated in the three-day Miss Maryland Agriculture Contest. They all did a perfect job and each and everyone is a winner.

Our sincere thanks to everyone who supported and attended the contest. We certainly appreciated all of the county Farm Bureaus who sent the winners of their programs to compete in the state contest. The parents deserve so much praise and thanks for sending us such wonderful young daughters. We enjoyed every moment with them.

It is so important that the counties include these young agriculturalists in their activities and programs. They are qualified to go into the schools to teach and will do a great job for agriculture.

Many thanks to the Friends of the 2008 Miss Maryland Agriculture program who so generously donated funds to support the extra day of educational tours for the young ladies. It is this extra support that enables us to expand the program.

It is also important to thank the Maryland State Fair, President Grove Miller, Manager Max Mosner and Assistant Manager Andy Cashman for being our partners in this program. Without them, this project would not be possible.

Finally, the Miss Maryland Agriculture Committee deserves a standing ovation for the job that they have done, led by Mary Amoss. Members are Hannah Amoss, Angela Bachtel, Janice Davis, Rebecca Lippy, Julie Roop, Laura Ruhlman, Evelyn Wilcom and David Willoughby. This is a program that takes a year's planning and preparation. Great job!

Let us not forget our terrific emcee and three capable judges. What a very tough task they had. The best part is that they enjoyed talking to and interviewing these wonderful young ladies and were very happy to meet the challenge.

My sincere thanks to everyone who participated and worked to make this program so successful. It is so crucial that we continue to support our younger generation, so there will be agriculture in the future of Maryland. Once again, congratulations to these 22 young ladies and our very best wishes in the future. Thank you from all of us.

Evelyn Wilcom, Chair
Maryland Farm Bureau Women's
Leadership Committee

Friends of the 2008
Miss Maryland Agriculture Program

Baltimore County Farm Bureau
Nationwide Insurance
Carroll County Farm Bureau
Frederick County Farm Bureau
Evelyn and the late Michael Wilcom
Harford County Government – Division of Agriculture
Babcock Service Center

(continued on page 7)

**MARYLAND FARM BUREAU YOUNG FARMER
 LEADERSHIP RETREAT**

**FEBRUARY 27 – MARCH 1, 2009
 WISP RESORT, Mc HENRY, MD**

Hosted by Garrett County Farm Bureau

Come be a Maryland young agricultural leader as we gather for a weekend of productivity and fun! Various activities will be offered including the discussion meet.
 FOR MORE INFORMATION, CONTACT MARYLAND FARM BUREAU
 1-800-248-9012

RESERVATIONS AND PAYMENT ARE DUE BY JANUARY 1, 2009
****All prices are subject to change**NO REFUNDS AFTER January 25, 2009****

Name(s): _____

Children: _____
 (Please include ages of any children attending)

Address: _____

City: _____ State: _____ Zip: _____ Phone: _____

Email Address: _____

Registration (Includes banquet, conference materials, Sunday breakfast)
 # of people attending X \$80 per person = _____

Lodging (2 people per room) \$125 per room = _____
 Friday Lodging \$125 per room = _____
 Saturday Lodging

Please select only one (ski rental of \$30 NOT included)
 Skiing \$55 per person = _____
 Tubing \$20 per person = _____

Early Bird Discount \$25 per room = (_____)
 MUST register by November 1, 2008 \$25 per room = (_____)
 YF member Dairy Bar Discount (include coupon)

LATE FEE \$30 per person = _____

DEADLINE: JANUARY 1, 2009
NO REFUNDS AFTER January 25, 2009
 Total _____
 Mail Payment & Form to: Maryland Farm Bureau, Attn: Field Services, 8930 Liberty Road,
 Randallstown, MD 21133 or email: laurar.mdfb@erols.com

Dairy Bar Thanks!

The Maryland Farm Bureau Young Farmers Dairy Bar would not be a successful venture without the help of many. Thanks to all of those that volunteered their time by selling tickets, taking orders and dipping.

A special thanks goes to our Corporate and Patron Sponsors. Please give these people, organizations and businesses your thanks for making this fund-raiser such a success.

Platinum Level

- Rochelle Creighton-Tompa Creighton Insurance & Investments
- Richardson Farms
- McGrew Equipment Inc.

Gold Level

- Joseph L. Bishop Insurance Agency
- Germantown Copy Center
- MidAtlantic Farm Credit

Bronze Level

- Worcester County Farm Bureau
- The Priest Family
- Rice Farms- William & Melinda Rice
- Talbot County Farm Bureau

Letter of Thanks

Our sincere thanks to all of our friends in Maryland Farm Bureau for your many expressions of sympathy, cards, letters, phone calls and flowers after the recent passing of Mike Wilcom, my beloved husband and our father. Thanks to all who so generously contributed to the agricultural scholarship fund in Mike's honor.

Thanks for all of your thoughts and prayers and especially for your friendship.

Mike's heart and soul has always been in farming. He cared so much for Farm Bureau as his other family. Thank you for being his other family and for being his friends.

God Bless You All,
 Evelyn, Mark and Chris Wilcom



**By David Beall
Carroll County Farm
Bureau President &
PAC Board Member**

WHY I SUPPORT THE MFB PAC

I have been involved with my Carroll County Farm Bureau Board of Directors for almost 10 years. I know to some, 10 years is still a rookie but you have to start somewhere.

I do believe that my work has made a difference, both at the county and state level. I have even contributed on the national level as a commodity representative. But the impact I can have as one person is limited. With my Farm Bureau duties, as with any other volunteer work, I can only be so effective. Life's other duties take my time and the older I get, the less time I seem to have to do things.

It is because I want to achieve better results from my efforts in the Farm Bureau that I contribute my time and my support to the Political Action Committee. I was able to be on this committee board soon after it formed and I have watched it grow over its brief history. I was astonished to see the results our PAC was able to achieve on the local and state government levels. Politicians stood up and noticed the Maryland Farm Bureau when the PAC was formed. Our success rate in the last election was nothing less than astonishing!

The success of the PAC means that we have elected officials at all levels of government who are aware of our position on the issues and respect that we are a 30,000-member group that spans every county in the state. This level of respect is how the PAC benefits all of the members of the Maryland Farm Bureau. Our representatives come to us for advice on where we stand on issues and they value our opinion as a bipartisan organization that encompasses a wide variety of our population.

Common sense has always been the trademark of a farmer and that carries through on our opinions and policies. Elected officials often need a beacon to show them the way through the political chaos that occurs all too frequently. The Farm Bureau is that beacon and we are well respected by our political leaders.

PAC groups have often been cast in an unfavorable light by the media. The terms "special interest group" is often associated with a PAC and some try to make PAC a dirty word. Well, if protecting our rural way of life, our farms, our property and our food supply qualify me as a member in a special interest group, than count me in! My farm, my family and my food supply are at the top of my list when it comes to my special interests.

The PAC has proven to be an extremely effective means to amplify my efforts in the Farm Bureau. A small contribution of my time and my money go a long way in protecting my dearest interests.

I believe in the work that the Maryland Farm Bureau Political Action Committee is doing and I will continue to support the PAC in the good work that it is doing. How about you?

Maryland Agricultural Mediation Service Re-tools



Farmers and others in the agricultural community who may be embroiled in nagging disputes with family members, neighbors, government agencies or even lenders can get a fresh start by trying mediation through the Maryland Agricultural Conflict Resolution Service (Maryland ACReS). Maryland ACReS is a quick, confidential, no- or low-cost service offered by the Maryland Department of Agriculture (MDA) and is available to Marylanders to help resolve agricultural related disputes before they end up in court.

"There are no winners in agriculture when a disagreement goes to court," said Agriculture Secretary Roger Richardson. "The time and cost associated with lawsuits and litigation strain everyone's resources and often result in outcomes that satisfy no one. We hope farm operators and their non-farm/off-farm neighbors will try our mediation service before a situation becomes unbearable or goes to court."

For more information about Maryland ACReS or to request mediation services, log on to www.marylandacrs.org or contact Eddie Johnson at 410-841-5778 or johnsone@mda.state.md.us.

Friends of the 2008 Miss Maryland Agriculture Program

(continued from page 5)

**SUCCESSFUL MISS MARYLAND
AGRICULTURE CONTEST**

Hunt Valley Motor Coach
IMark Builders Inc.
Queen Acres Farm
Majestic Meadows Nubians
Sagamore Farm
Maryland Agriculture Education Foundation
Breidenbaugh Farms
Belevedere Farm
Catoctin Mountain Orchard
Richardson's Farm Market
Janice Encapara
Janice Coronoes
Minuteman Press
Weber's Cider Mill Farm
Joe and Eleanor Free
Brookfield Pumpkins
Hill's Forest Fruit Farm

**Nationwide® Agribusiness Insurance & Maryland Farm Bureau
Working Together to Protect What Matters**

SCHEDULE OF EVENTS

September

- 7 Dorchester County Young Farmer Sporting Clay Shoot
- 11 Caroline County Farm Bureau Annual Meeting, Denton
- 23 Allegany/Garrett Policy Meeting, Allegany Fairgrounds
- 27 Carroll County Farm Bureau Young Farmers Gun Raffle

October

- 7 Allegany County Farm Bureau Banquet, Fairgrounds
- 9 Frederick County Farm Bureau Annual Meeting, New Midway Fire Hall
- 16 Garrett County Farm Bureau Banquet
- 28 Carroll County Farm Bureau Banquet

November

- 4 Election Day
- 5 Baltimore County Farm Bureau Banquet
- 6 Maryland Agricultural Education Foundation Banquet
- 8 Harford County Farm Bureau Banquet
- 11 Prince George's County Farm Bureau Annual Meeting, Baden Volunteer Fire Department, Brandywine
- 11 Montgomery County Farm Bureau Banquet

December

- 7-10 Maryland Farm Bureau Annual Meeting and Convention, Ocean City

January 2009

- 11-14 American Farm Bureau Federation Annual Meeting and Convention, San Antonio, Texas

February 2009

- 27-March 1 Maryland Farm Bureau Young Farmer Leadership Retreat, Wisp Resort

March 2009

- 13 Charles County Farm Bureau Banquet

(To get your county's activities listed on the calendar please send the date, event, place and time to Susan Summers at ssummers@comcast.net.)

Maryland Farm Bureau
8930 Liberty Road, Randallstown, MD 21133-4295

Presorted
First-Class Mail
US Postage
PAID
Permit No. 892

Delegation trip details announced for AFBF Convention

(continued from page 3)

Rates per person

\$500* double occupancy \$844* single occupancy

Per person, **transportation not included.*

NOTE: Children 17 and under sharing a room with two adults stay free in hotel.

Deposit of \$100 per person, due with booking

Full payment is due by November 26, 2008

Book Your Airline Reservation

For the best schedules at the lowest rates, call Chris Davis at Conference & Travel at **800-346-9807** or email cdavis@ctsvacation.com.

San Antonio Transfers

Airport shuttle service is available to the Hyatt Regency for \$18 per person, each way. Transfers can be purchased directly with the shuttle service at the baggage claim area. Advance reservations are not necessary. Cost for a taxi is \$20-\$25 one way.

Former Farm Bureau leader passes away

Past Baltimore County Farm Bureau President and former Interim Administrator for Maryland Farm Bureau, Dick Curran, passed away on July 24th.

Memorial gifts may be made to The G. Richard Curran Scholarship Fund and mailed to Baltimore County Farm Bureau, 1840 York Road, Suite J, Timonium, MD 21093.

Condolences may be sent to his wife, Danka Curran, 339 Hook Road, Westminster, MD 21157 and son, Patrick Curran, 71 Northridge Drive, Hanover, PA 19331.

*Keep on top of what's going on...
...www.mdfarmbureau.com*